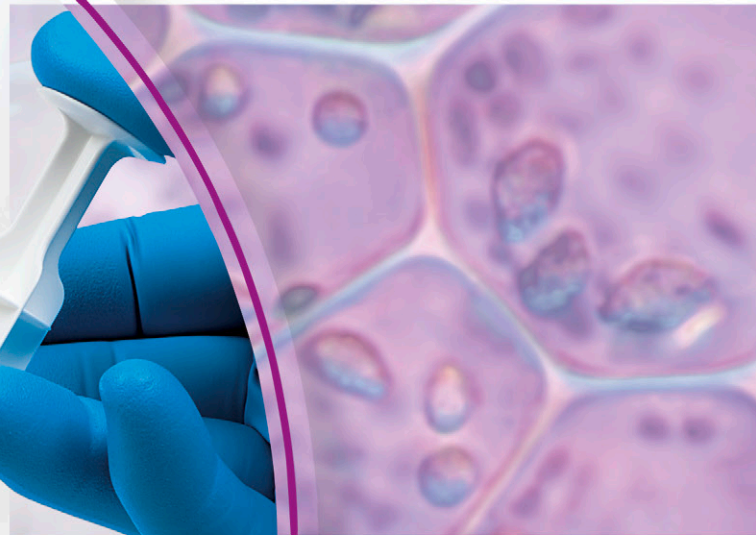
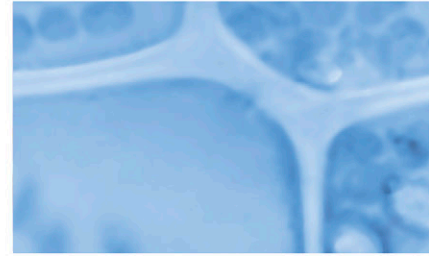


CODAN CYTO[®]



Protocol
Cyto-Ad-Wing Z[®] and Connect Z[®]



CODAN CYTO[®] Safe preparation of cytostati

Observing of the generally applicable hygiene and occupational safety regulations is a prerequisite!

Preparation:
Remove the Connect Z[®], Connect Z[®] Clip, CODAN Spike, Male Luer-Lock single use syringe, medication vial and the infusion bag from the respective packaging and set them out ready-to-use.

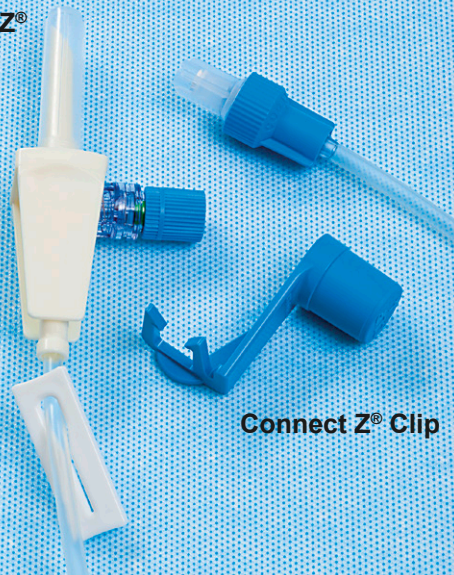
CODAN Spike



Male Luer-Lock single use syringe



Connect Z[®]



Connect Z[®] Clip

Infusion bag



1

Venting the Connect Z[®]

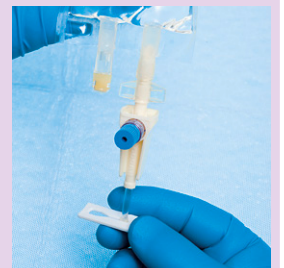
Insert the spike of the Connect Z[®] system in the corresponding connection of the infusion bag. Prime the Connect Z[®] by gravity. The filter in the FlowStop protection cap allows air to escape and retains the fluid.



2

Slide clamp

Close the slide clamp on the tube a fingerbreadth below the spike of the Connect Z[®].





3

Connect Z[®] with I.V.STAR[®] 10 filter

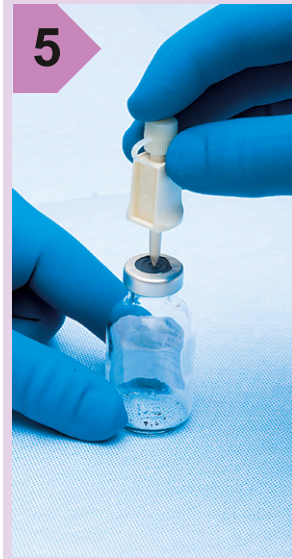
The Connect Z[®] with I.V.STAR[®] 10 filter must be primed with the filter in a vertical position. The lettering CODAN must be visible. This ensures that the filter surface is evenly wetted and achieves optimal functioning of the filter.



4

Filling the syringe

Disconnect the blue closure plug and keep it safe. Connect the syringe up to the mixing adapter of the Connect Z[®] system and draw the amount of fluid required for dissolving the dry substance into the syringe. The mechanism of the mixing adapter opens when the syringe is connected. The system closes again when the syringe is disconnected from the mixing adapter. Then screw the blue closure plug back onto the mixing adapter.



5



7

Filling the syringe

Hold the medication vial upside down and draw approximately 20 % of the required quantity of fluid into the syringe. Check whether there is any air in the syringe. If no air is present, the remainder of the required fluid can be drawn in as well. If there is air in the syringe, it must be expelled by pressing the syringe carefully until no more bubbles appear in the medication vial. Then the required fluid can be drawn off.



8

Drawing off remaining amounts

The filter surface of the CODAN Spike faces upwards. Before disconnecting the syringe, draw approximately 2-3 ml of sterile air into the syringe.



9



11

Mixing in the bag

In order to achieve better mixing, approximately 20 % of the injected volume is then drawn back into the syringe.



12

To remove the cytostatic from the mixing adapter, the remaining air (approximately 2-3 ml) in the syringe is injected into the system.

Inserting the spike

Insert the CODAN Spike through the septum of the medication vial. The pressure is equalised via a 0,2 µm ventilation filter integrated in the CODAN Spike.



Dissolving the dry substance

Connect the syringe onto the CODAN Spike and inject the liquid into the vertical medication vial. Leave the syringe on the CODAN Spike.

The excess pressure which builds up in the vial is released by the 0,2 µm ventilation filter in the CODAN Spike. Toxic aerosols are reliably retained.



Now dissolve the dry substance in the medication vial by swirling (not shaking!) it gently.



Disconnecting the syringe

Disconnect the syringe from the CODAN Spike in the horizontal position. Close the closure plug of the CODAN Spike.



Transferring medication to the bag

Connect the syringe in a semi-horizontal position to the mixing adapter of the Connect Z[®] system. Inject the fluid in a vertical position.

Then inject all the fluid.
The approximately 2-3 ml of air remain in the syringe.



Disconnecting the syringe

Disconnect the syringe in a horizontal position and screw the blue closure plug back onto the mixing adapter.



Connect Z[®] Clip

The Connect Z[®] Clip from CODAN provides an additional means of ensuring a secure connection between certain infusion bags and the spike.



14

Preparation complete

The tube of the Connect Z[®] system is now primed with basic solution. The medication to be administered is now only in the bag and is secured by the slide clamp. The cytostatic unit can now be labelled and packed for transport.



Safe administration of cytostatics

1

Checking the Cyto-Ad-Wing Z[®]

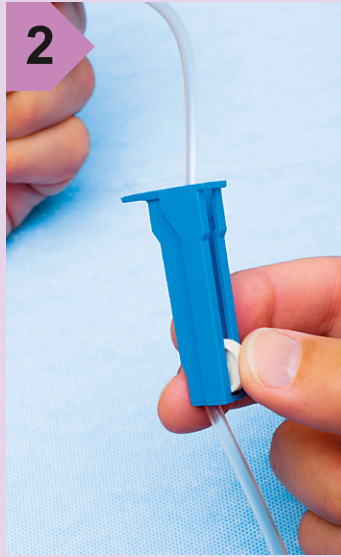
Hang the infusion bag on the stand. Unpack the Cyto-Ad-Wing Z[®] and check it for any damage. Check that the closure plugs of the Female Luer-Lock adapters are tight and tighten if necessary.



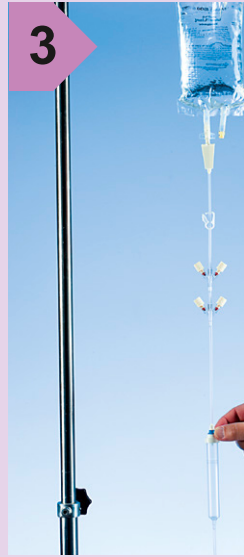
2

Closing the roller clamp

Close the roller clamp on the Cyto-Ad-Wing Z[®].



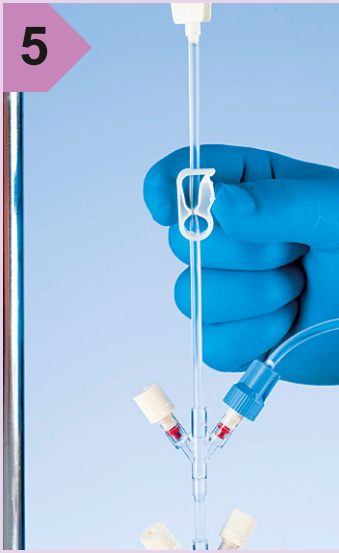
3



5

Closing the pinch clamp

Close the pinch clamp of the Cyto-Ad-Wing Z[®] system.



6



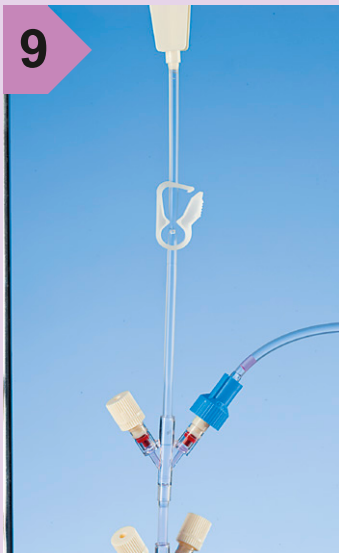
Administra the cyto

The slide clamp open for you to the cytostatic the cytostatic administered; line remains c

9

Opening the pinch clamp

Open the pinch clamp on the Cyto-Ad-Wing Z[®] and close the roller clamp.



10

Refilling the drip chamber

The blue Wing-Valve is pressed to raise the fluid level in the drip chamber up to the level ring and the main line can be flushed after setting the drip rate using the roller clamp.



11





Manufacturer

CODAN Medizinische Geräte GmbH
Stig Husted-Andersen Straße 11 · 23738 Lensahn, Germany
Tel. +49 (0) 43 63 · 51 11 · Fax +49 (0) 43 63 · 51 12 14
codan@codan.de · www.codancompanies.com

The decisive connection

Venting the set

Connect the spike of the Cyto-Ad-Wing Z[®] up to the infusion bag. Fill the drip chamber 3/4 by pressing the blue Wing-Valve, then open the roller clamp slowly and fill the rest of the system. The FlowStop protection cap allows air to escape, thus completely venting the system. Then close the roller clamp again.

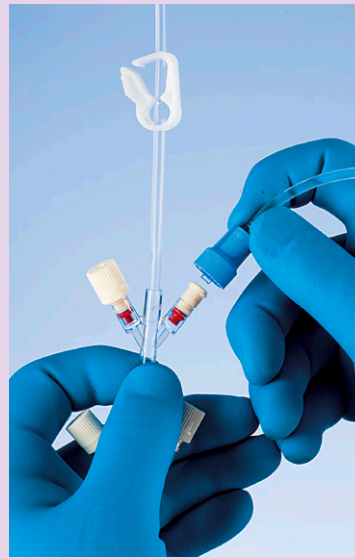


4



Connecting the Connect Z[®]

Set out a prepared Connect Z[®], checking its identity and intactness. The slide clamp must be closed, then the FlowStop protection cap can be removed. When the infusion is in progress, the Connect Z[®] can be connected to one of the Female Luer-Lock adapters of the Cyto-Ad-Wing Z[®] system.



Administration of the cytostatic unit

The slide clamp must be closed to administer the cytostatic unit. Only the main line is closed.

7



Administration of the cytostatic unit

The basic solution with which the drip chamber was previously filled now mixes with the medication. The drip rate is set via the roller clamp of the Cyto-Ad-Wing Z[®] system as usual. It is also possible to use a drip detector.



8



Draining the Connect Z[®]

The empty bag collapses, the Connect Z[®] also drains and the infusion stops. Then close the slide clamp.



Further medication after rinsing the system

Before administering further medication, we recommend rinsing the system with 50 ml before connecting another prepared Connect Z[®] to the Cyto-Ad-Wing Z[®]. This procedure can be repeated until all the Cyto-Ad-Wing Z[®] connections are occupied.

12



Flushing and disposal

After the last medication unit is given, we recommend flushing the main line with at least 100 ml of rinsing solution to exclude the possibility of medication remaining in the system. Then close the roller clamp, disconnect the Cyto-Ad-Wing Z[®] from the intravenous access and dispose of the whole set.

Do not disconnect the Connect Z[®] during or after the infusion in order to maintain the closed system.